

The Moorings 4800

STANDARD BOAT EQUIPMENT LIST - MOORINGS UPGRADES ON FINAL PAGE*

SALOON

Laminate finishes with solid wood trims
Wear resistant simulated wood flooring
Saloon table
Settee - U-shape
LED overhead lighting
Ample ventilation through forward facing portlights
Stowage space under settee cushions
2 x *Vetus Magnus 5151* Escape hatches
under stairways to hulls
Front doorway access to forward cockpit

GALLEY

Corian galley worktop surfaces
Single lever mixer faucet
Double sink (stainless steel)
Dish and cutlery drying recess with drainage
Cover for drying recess
Vitrifrigo 2-drawer front-opening fridge/freezer
56USgal / 212L 12v
ENO gas 3-burner stovetop
ENO gas oven
Gas solenoid shut-off valve with control at
switch panel & warning light at cooker
Gas cylinder regulator in dedicated cockpit LPG locker
Separate garbage bin locker with side & top access
Stowage space in shelf lockers
Corian galley shelf with spice rack

NAVIGATION CONSOLE

Chart table with overhead LED light
Instrument and switch panel
Chart table bench seat with stowage under cushion

CABINS x 4

Laminate finishes with solid wood trims
Double berths:
- Fwd Bunks (56in x 80in / 1.42m x 2.05m)
- Aft Bunks (59in x 80in / 1.50m x 2.05m)
Hanging locker with lower shelf
Bedside cave locker/table
LED overhead lighting
LED reading lamps
Overhead roller blinds for privacy
Large open shelves
Stowage drawers under bunk
Large hull window incorporating portlight and pleated blind

HEAD COMPARTMENTS x 4

Washbasin with basin mixer and Corian top
Vanity locker with mirror
Towel hook, rail and ring
Separate shower compartment with *Perspex* door,
lever mixer and adjustable shower rose
Shower sump with push-button drainage
LED Overhead lighting
Overhead roller blinds for privacy
PAR Brydon large bowl manual toilet*

ENGINE & CONTROLS

Morse double lever throttle / gearshift control
Sound deadening panels in engine room
2 x Engine room ventilation fans and ducting
2 x *Yanmar* 3JH5E 39HP diesel engines*
2 x SD60 sail drives with 3-blade fixed propellers
2 x Fuel deck fillers
2 x *Yanmar* fuel filters / water separators
2 x Fuel tanks (aluminium). Total capacity 185USgal / 700L
2 x Exhaust skin fittings (stainless steel)
2 x Exhaust water locks
2 x Cooling water inlet strainers
2 x Exhaust cooling water temperature sensors with
audible alarms at helm

PLUMBING INSTALLATION

Hot and cold pressurized fresh water system:
2 x Water tanks. Total capacity 206USgal / 780L
1 x *Jabsco Par Max* 3.5 GPM fresh water pump
with 1L *Jabsco* accumulator tank
2 x Hot water tanks. Total capacity 12USgal / 46L
Transom shower (cold only)*
4 x Shower drain pumps with filters
2 x Holding tanks. Total capacity 45USgal / 170L
2 x Electric bilge pumps (keel sump) with float switches
and alarm at switch panel
2 x Manual bilge pumps with strum boxes (keel sump)
2 x High water bilge float switches with
alarm at switch panel
2 x Electric bilge pumps (engine room) with alarm
at switch panel

RUDDER & STEERING SYSTEM

Balanced spade rudders
Rudder stock in F16ph (stainless steel)
JP3 Self aligning bearings
Edson chain and wire steering system with bulkhead
steering unit and brake
Destroyer-type steering wheel
Emergency tiller (stainless steel)

ELECTRICAL INSTALLATION

LED Courtesy lights at stairways
Bi-colour & stern navlights
12v DC switch panel
2 x 12v Outlet sockets at switch panel and helmstation
2 x Fuel tank gauges at helmstation
2 x Ammeters at helm position
2 x House batteries - 210Ah deep cycle lead acid type*
2 x Engine starter batteries - 100Ah lead acid type*
1 x House battery isolator switch
2 x Engine starter battery isolator switches
2 x Alternators, standard with engines
1 x Electrical spares kit: fuses, relays, fuse holders

The Moorings 4800

STANDARD BOAT EQUIPMENT LIST

DECK FITTINGS

Guardwires with stanchions, bases, port & stb side gates (stainless steel)
Guardwires across bow and stern
1500w vertical windlass 10mm chain gypsy with hand-held windless remote
Anchor bow roller fitting
Anchor chain stopper
Liferaft locker with convertible fore/aft seat bolster
Sliding companionway door - 2 leaf
Hardtop over cockpit complete with LED lighting
Hardtop bimini over helm with supports (stainless steel) and LED lighting
Swimming ladder with teak steps
Cockpit table
Furler jammer on deck
Bridle mainsheet system (3:1 purchase)
Trampoline (white *Aquabatten Supertramp*)
Helmseat
Lifering holder (stainless steel)
Acrylic smoke grey tinted windows
Hardtop supports (stainless steel)
Side window brows
Hatches - *Lewmar*:
 4 x Size 10 Flush Hatch over heads
 4 x Size 44 Flush Hatch over cabins
 2 x Size 60 Flush Hatch on foredeck (vented)
 1 x Size 70 Flush Hatch over cockpit
Portlights - *Lewmar*:
 2 x Size 5 in windscreen
 10 x Size 1 in hull side and transom
1 x Chain locker
1 x Anchor/windlass locker
2 x Foredeck lockers
Forward lounging cockpit with hardtop with watertight saloon access door and sliding hatch for easy foredeck access
1 x Forward cockpit locker
2 x Seats with stowage locker under in forward cockpit
2 x Pulpits with seat
2 x Pushpits
2 x Coachroof handrails (stainless steel)
7 x 330mm mooring cleats
2 x *Lewmar* winch handles
1 x *Lewmar* 55EST (alloy) electric halyard / sheet winch
2 x Transom handrails

DECK FITTINGS (continued)

1 x *Lewmar* 55ST (alloy) halyard / sheet winch
1 x *Lewmar* 55ST (alloy) main sheet winch
2 x *Lewmar* genoa cars with pin stop
2 x *Lewmar* genoa tracks
1 x Winch handle pocket at helm
2 x *Spinlock* main halyard clutch at helm
2 x *Spinlock* genoa clutch at helm
2 x *Spinlock* mainsheet clutch at helm
2 x *Spinlock* reef clutch at helm
1 x Clutch and cleat on mast for genoa halyard
4 x Padeyes to allow for gennaker tackle
Drink holders (4 x in forward cockpit, 2 x at helmstation, 1 x in aft cockpit)

NAVIGATION EQUIPMENT

Compass at helm position

RUNNING RIGGING

2 x Main sheets (3:1 purchase)
2 x Genoa sheets
3 x Halyards (main, genoa & spare)
2 x Single line reefs lead aft
Main boom topping lift

MAST, RIGGING & SAILS

Sparcraft natural anodized mast with steps
Sparcraft natural anodized crossbeam with cleats
Windex wind indicator
Profurl genoa furler
Ullman mainsail full battened with 2 rows reef points
Ullman 120% furling genoa
2 x Additional spare 12v wires in mast
Additional spare conduit with messenger in mast

GENERAL EQUIPMENT

6 x Fire extinguishers
Owner's Operating Manual
CE Certification
NMMA Certification

The Moorings 4800

EXTRA CHARTER YACHT EQUIPMENT LIST

ELECTRICAL INSTALLATION

Raymarine Instrument Package: includes Ray55 VHF at navstation, p70 color autopilot display, C95 chartplotter with WiFi, i60 wind instrument & i50 Tridata speed, log & depth instrument with retract. depth & speed transducers.

110v or 220v hard wired shore power cord. Includes 1 x heavy duty 30amp shore power line, AC switch panel, AC double outlets in cabin, galley and at switch panel

Fusion 700i Series Marine stereo in saloon with docking station. Includes Bluetooth, USB, & AUX connectivity. 2 x *Fusion* Marine speakers in saloon & 2 x in aft cockpit. Wired remote control at helm station

Battery charger 60amp

AGM upgrade to House and Engine start from Lead Acid

1 x additional AGM House battery (210Ah)

3 x Ventilation fans in saloon and 1 x in each stateroom

Northern Lights 9kw Genset + Battery and fittings

3 x *Cruisair* Air Conditioning - Total 40,000 BTU

23" Flat screen TV/DVD in saloon Dual 110v/220v combo

2 x Solar panels 70w each fitted to hard top

2 x *Fusion* Marine speakers in forward cockpit

Forward looking Garmin camera displays through MFD at Helm

DECK FITTINGS

Removable helmseat spray dodger/windscreen

Custom davit system with electric winch (stainless steel)

Coachroof side windows removable shade covers

Cockpit side and back curtains

Upholstered fixed cockpit stools (stainless steel)

PLUMBING INSTALLATION

4 x Electric Flushing toilets in lieu of standard

Stern shower: Hot and cold in lieu of standard

MAST, RIGGING & SAILS

Boom cover stackpack system

INTERIOR

Starboard forepeak has berth, head, shower, basin, light & fan
(Access from deck hatch only for crew or single guest)

Port forepeak has single berth light & fan with access
from deck and port forward cabin

Saloon table converts to a double berth with cushions

Microwave oven in galley

GENERAL SPECIFICATIONS

Length Overall: 14.75m / 48ft 5in
Waterline Length: 13.85m / 45ft 5in
Mast Height: 22.60m / 74ft 2in
Beam: 7.64m / 25ft
Draft: 1.47m / 4ft 10in
Displacement: 17,000kg / 37,480lb
Fuel Capacity: 700L / 185USgal
Water Capacity: 780L / 206USgal
Sail Area: 144.5sqm / 1,555sqft
Engines: 2 x 57HP

ENGINE & CONTROLS

2 x *Yanmar* 4JH57 57HP engines in lieu of 39HP

COMMISSIONING

Transport Documentation and Commissioning

Transport to CT Harbor, launching, stepping
of mast, installation of sails and rigging,
commissioning of equipment and sea trials

Antifouling Paint

CE Certification

DELIVERY

Delivery from Cape Town to Charter Port

SAFETY GEAR

55lb (25kg) Delta Anchor with 230ft (70m) of chain

35lb (15kg) Brittney Anchor with 26ft (8m) of chain
and 200ft (61m) warp

Anchor Bridle, shackles and hook

6 x Fenders

4 x Mooring lines 18mm (70") x 10m (32'10")

2 x Spring Lines 18mm (70") x 15m (49'2")

12 x Life jackets

Safety Harnesses

Bell

Flare Kit

Binoculars

Navigation tools: Parallel Rule, Compass, Dividers

CRUISING GEAR

Plates, cups, saucers, glasses for twelve (12)

Bed linens for twelve (12)

Flatware for twelve (12)

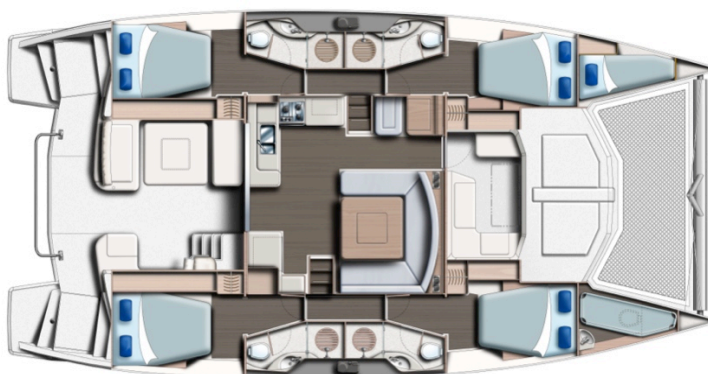
Pots, pans, miscellaneous food prep

Cooking & serving utensils

Coffee pot, tea kettle, toaster

Snorkeling gear for twelve (12)

Towels and washcloths for twelve (12)



The Builder reserves the right to change or amend the contents of this document at any time without prior notification to any third party and no liability will be accepted for errors contained within the same.